

# Daugavpils Rural Municipal Council

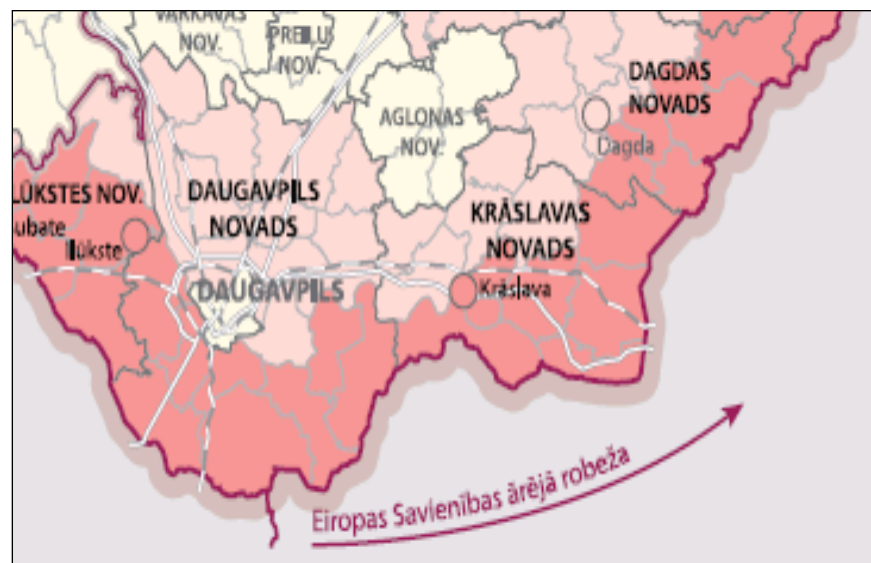
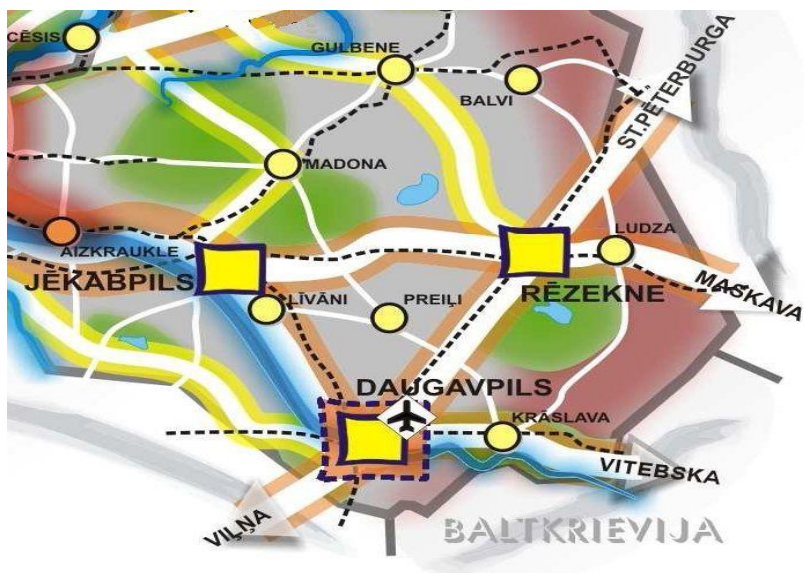
Daugavpils district





# Location of Daugavpils Rural Municipal Council

**Geographical location:** Daugavpils city, roads, railways, transport corridors, airports, border area



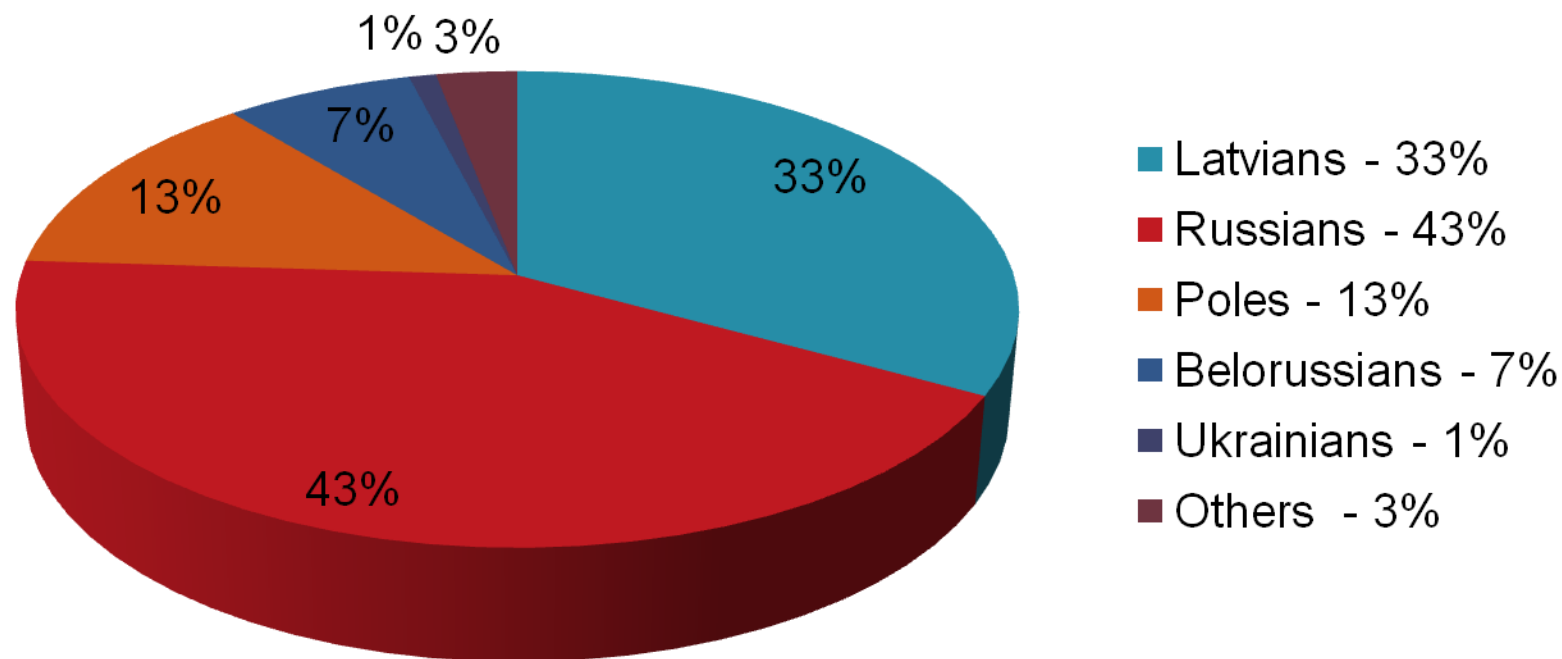


## Daugavpils Rural Municipal Council

- Territory: **1889.7** km<sup>2</sup>
- **19** civil parishes
- **26 913** inhabitants (data from 01.01.2013.)
- Population density – 14 people per 1 km<sup>2</sup>
- Age structure:
  - 12,37 % of inhabitants – till working age,
  - 66,66 % of inhabitants – of working age,
  - 20,97 % of inhabitants – over working age
- **4<sup>th</sup> largest municipality in Latvia by area** (2,9 % from the territory of Latvia)
- **13<sup>th</sup> largest municipality in Latvia by population** (1,3 % from all inhabitants of Latvia)



## Ethnical structure of Daugavpils Rural Municipal Council:





## 19 civil parishes (*from 01.07.2009.*)

- Ambeļu civil parish
- Biķernieku civil parish
- Demene civil parish
- Dubna civil parish
- Kalkūne civil parish
- Kalupe civil parish
- Laucesa civil parish
- Līksna civil parish
- Maļinova civil parish
- Medumi civil parish
- Naujene civil parish
- Nīcgale civil parish
- Saliena civil parish
- Skrudaliena civil parish
- Svente civil parish
- Tabore civil parish
- Vabolescivil parish
- Vecsaliena civil parish
- Višķi civil parish





# Institutions of Daugavpils Rural Municipal Council

## Educational institutions:

- 17 schools
- 2 pre-schools
- 2 after-school institutions

## Cultural institutions:

- 20 cultural houses
- 21 libraries
- 3 museums
- 2 music and art schools

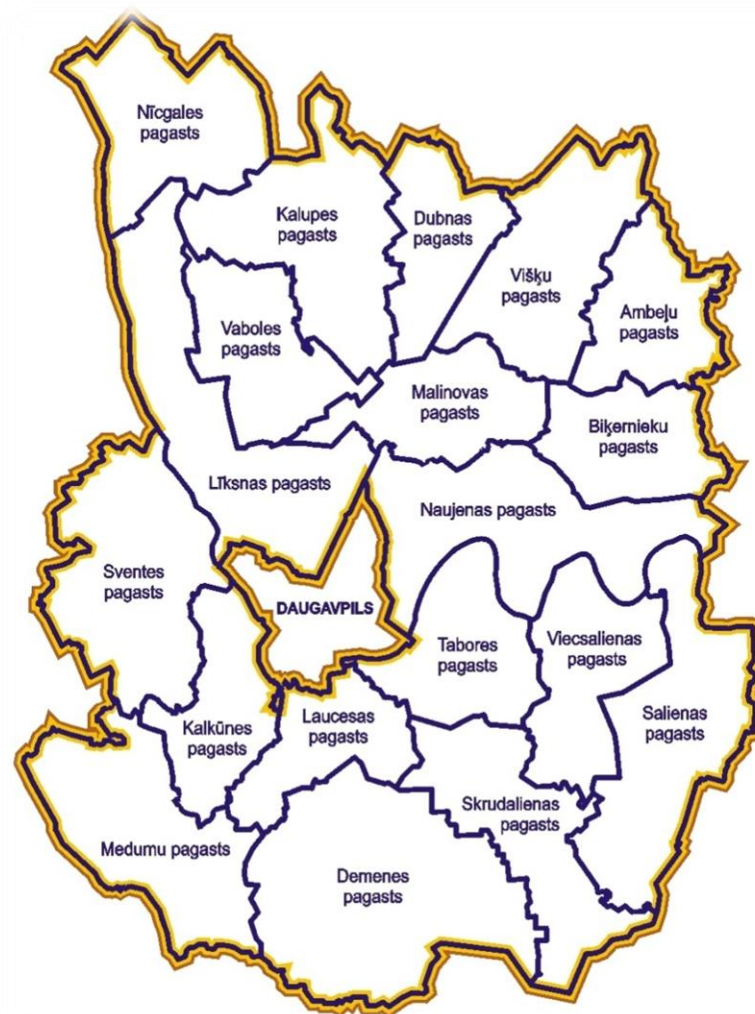
## Social institutions:

- 1 social service
- 1 orphanage
- 2 social care centres

5 orphans' courts,

1 municipal agency,

2 capital companies with 100 % capital of municipality.

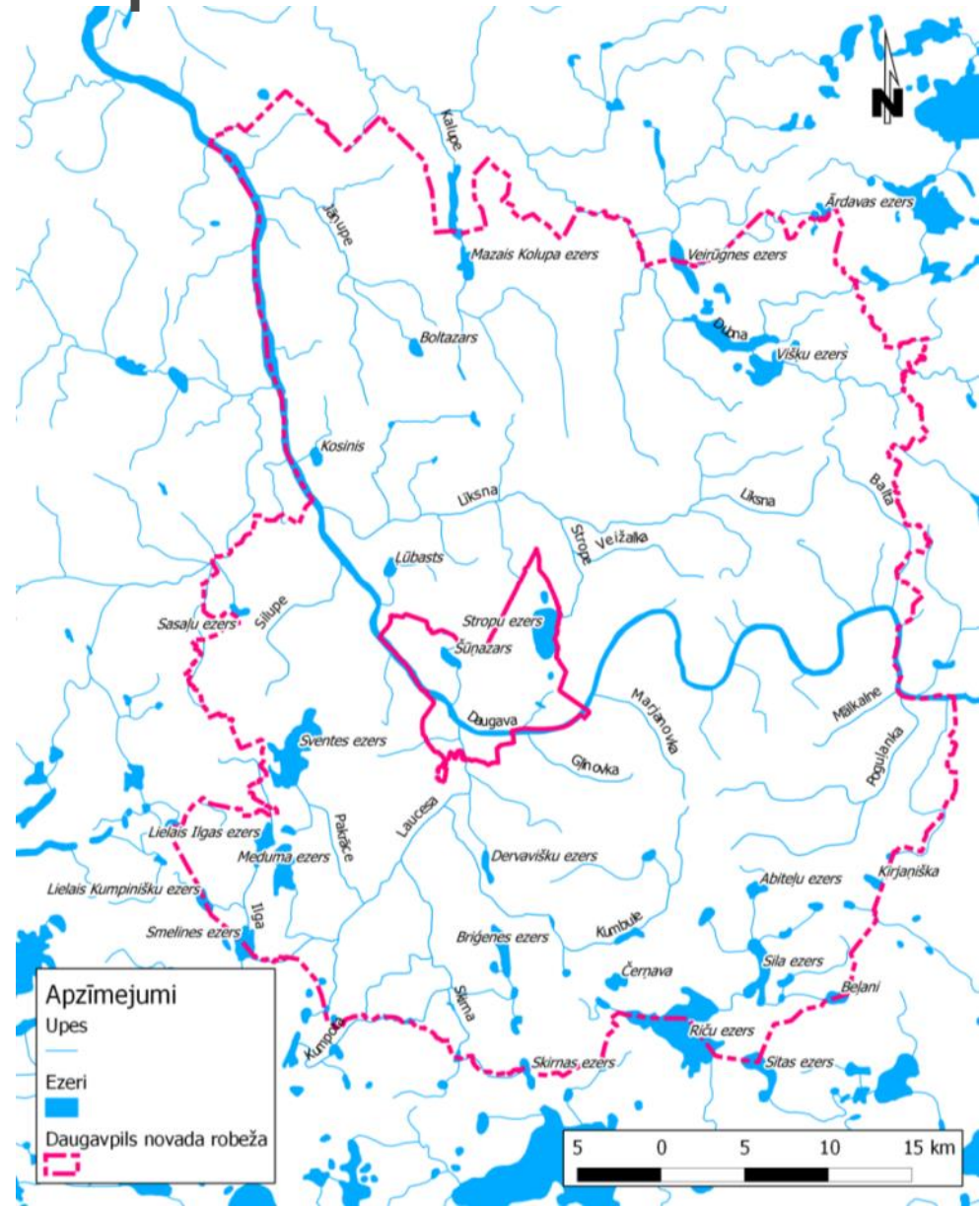




# Daugavpils Rural Municipal Council

There are 193 lakes in Daugavpils Rural Municipal Council larger than 1 ha

Sventes lake – 739 ha  
Riča lake – 588 ha  
Luknas lake – 409 ha  
Višķu lake – 360 ha  
Medumu lake – 265 ha  
Silenes lake – 262 ha









## Nature park “Daugavas loki”

- Part of Augšdaugava protected landscape area
- Established in 1990
- Aim – to preserve the unique natural complexes, natural, cultural and historical values and little transformed landscapes of the ancient valley of the Daugava on the site of Naujene to Krāslava
- Natura 2000 territory from 2004
- Included in Latvian National UNESCO World Heritage List in 2011
- Oldest geological formations in Latvia
- International folk art festival “Augšdaugava”





# Naujene Local History Museum

- Ethnographical Old Believer Village of Slutiski
- Heritage of the Latgalian Old-believer
- Dinaburg Castle Ruins and a Model of a Castle
- Different creative workshops: pancake workshop, clay workshop etc.
- **Take part in creating a new Guinness record - Augsdaugava Big quilt**

[www.dnd.lv](http://www.dnd.lv)

[www.visitdaugavpils.lv](http://www.visitdaugavpils.lv)











# Daugavpils Rural Municipal Council

[www.dnd.lv](http://www.dnd.lv)